

Year 7 - some revision questions

What is a computer? _____

The following words are the names of different pieces of computer hardware that have been made into anagrams. Unjumble the words to find out what they are:

LERANTC SINGSCROPE TINU _____

ARKOYBED _____

PFOYLP SKID IVRED _____

NITROOM _____

What is a peripheral? _____


Type in the names of the items of software or hardware that are described in the table below:

	A hardware device that produces hardcopy
	An item of software that would enable you to write a letter to a friend
	A piece of hardware that enables you to move a pointer around the computer screen
	A computer program that allows you to create pictures
	An item of hardware that enables you to store your work on CDs
	The piece of hardware that tells everything else in your computer what to do.

What is a computer program? _____

A word-processor was used to create the following text:

Definitions



Hardcopy: printed output from your computer. See *printer*

Hardware: the physical components that make up a computer system.

List three features of the word-processor that have been used to make this document look more attractive

Feature 1 _____

Feature 2 _____

Feature 3 _____

List two advantages and one disadvantage of using a word-processor to type a business letter:

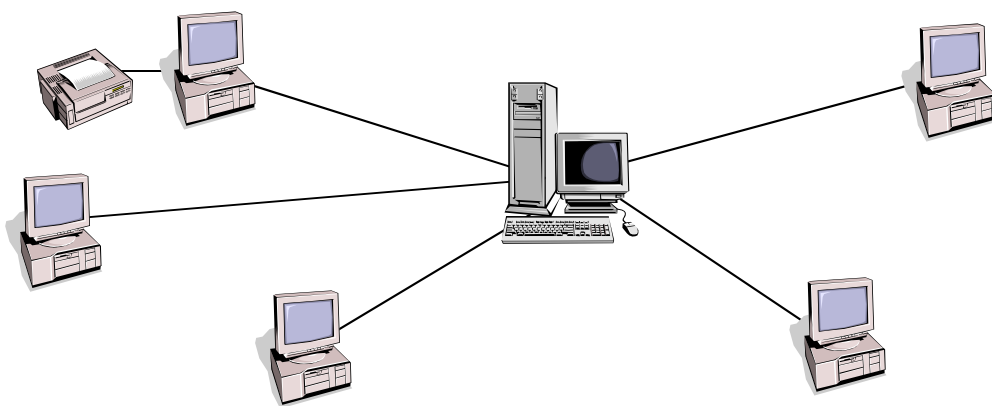
Advantage 1 _____

Advantage 2 _____

Disadvantage _____

What is clipart? _____

The diagram below shows a simple network. Use the words in the list at the bottom to label the diagram:



FILE SERVER - TERMINALS - CABLES - PRINTER SERVER

What is a local area network? _____

List two advantages and two disadvantages of using a network to help a small business make better use of their computers.

Advantage 1 _____

Advantage 2 _____

Disadvantage 1 _____

Disadvantage 2 _____